

## Product Update Notice

### Upgraded IG4 LED Sealed Ingrade

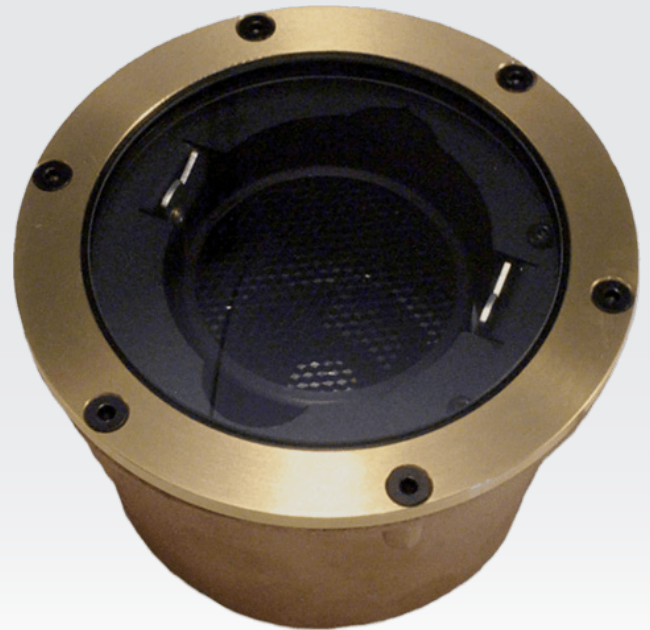
New COB Light Engine.

More CCT & CRI choices.

More optics choices.

More lumen output.

Same quality and reliability.



**P**recision cast and machined LED lighting fixture with 12V input LED Light Engine (COB with integrated driver module). Modular industry standard components allow for simple field replacement and future upgrade. Rugged cast bronze construction is suitable for the most corrosive of environments and is designed for in ground mounted up lighting in wet location landscape applications.

#### Features <sup>1</sup>

- Industry standard COB LED components used to simplify maintenance and future upgrades.
- Field replaceable internal components and connectors on wiring connections for easy installation and maintenance.
- One tool aiming provides hot-aiming convenience.
- Optional pour collar is suitable for concrete pour applications.
- Drive-over rated.
- IP68 rated.
- Faceplates available in three metal choices and eight styles with tamper-proof, captive screws.
- Replaceable tempered 1/4" thick glass lens and silicone lens gasket.

#### Specifications <sup>1</sup>

- Input voltage: 12VAC (±10%).
- Lumen Output (nominal): 400lm, 700lm, 1000lm. <sup>2</sup>
- Field replaceable optics: 15°, 24°, 36°, 55°, 65°.
- Color temperature: 2700K, 3000K, 3500K, 4000K.
- CRI options: 80, 90.
- Dimming: Phase dimming (ELV, MLV). <sup>3</sup>
- L70 > 40,000 hours.
- Protection (driver): short circuit, overload, thermal, auto-reset.

1. Features and Specifications subject to change without notice. Please see latest specification sheet(s) on website for latest information.  
2. Lumen Output (nominal) is ideal lumen output of light engine only in lab conditions. Actual fixture output will vary with fixture/cap type, material, lens/optics options, CRI, CCT, mounting, orientation, and environmental conditions. For more accurate information, see fixture photometry files on website.  
3. Contact Vision3 for dimmer compatibility.